

Commander | Polycarbonate

4 COVER SCREWS, LIFT OFF COVER



CONSTRUCTION

Material (Box & Cover)	Polycarbonate with UV inhibitors
Gasket Material	Poured polyurethane seamless gasket
Cover Screw Material	Custom polycarbonate screw
Cover Screw Size	Custom screw size
Cover Screw Torque	16 in.-lbs
Enclosure Mounting	Mounting wells located under the cover/outside the gasket area
Soft Edge Design	Rounded edges, minimal protrusions or exposed pocket areas for assembly of dust and debris

INDUSTRY STANDARDS

UL/cUL File #	E319779
NEMA Ratings (UL508A, UL50 & UL50e)	1, 3R, 4X, 6P, 12
IEC 60529 Ratings	IP66, IP67, IP68
Temperature Range	(-20°F to +240°F) (-29°C to +115°C)
Flammability Rating	UL94-5VA
Certifications	cULus, IEC, REACH, RoHS
Outdoor UV Exposure (UL 746C)	(f1) Rated
Chemical Resistance	See chart on page 120

ACCESSORIES

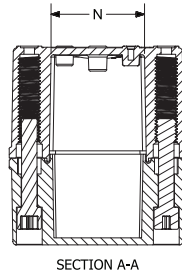
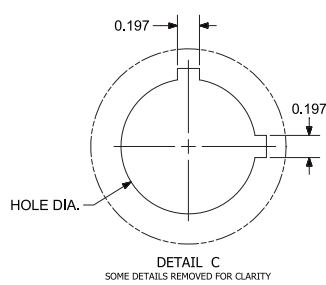
Accessory Kit (Screws)	pg. 104
All Other Accessories	Pg. 102-117

MODIFICATIONS

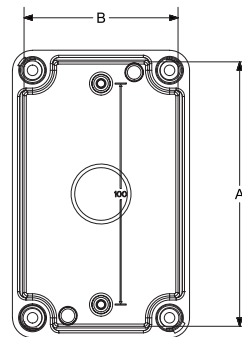
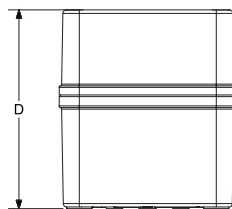
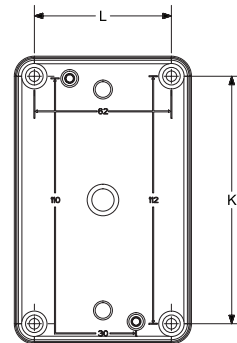
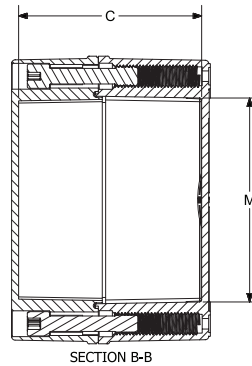
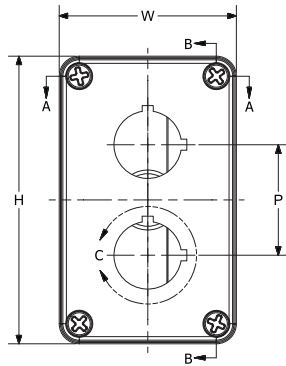
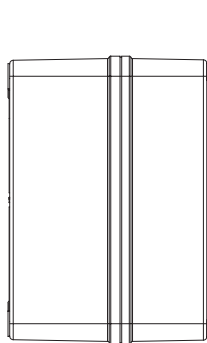
Custom Colors	pg. 10-11
Silk Screening	pg. 10-11
Custom Cutouts/Holes	pg. 10-11
EMI/RFI Shielding	pg. 10-11

Commander | Polycarbonate

TECHNICAL DRAWINGS / DIMENSIONS



COMMANDER SERIES POLYCARBONATE



- NOTES:
- CATALOG DRAWING IS FOR REFERENCE ONLY
 - SEE ACTUAL PART DRAWING FOR SPECIFIC DESIGN
 - COVER OPTIONS:
 - BLANK - NO HOLES
 - 1PB - (1) 30 mm DIA. HOLE
 - 2PB - (2) 30 mm DIA. HOLES
 - 1PB22 - (1) 22 mm DIA. HOLE
 - 2PB22 - (2) 22 mm DIA. HOLES

COMMANDER SERIES POLYCARBONATE DIMENSIONS

CATALOG NUMBER	HOLE CONFIG.	OVERALL H X W X D	INSIDE A X B X C	K	L	M	N	P	HOLE DIA.	SHIPPING WT.
COPC432	Blank	4.34 x 3.16 x 2.79 (110 x 80 x 71)	3.92 x 2.74 x 2.51 (100 x 70 x 64)	3.62 (92)	2.44 (62)	2.85 (72)	1.66 (42)	N/A	N/A	CF
COPC533	Blank	5.12 x 3.16 x 3.54 (130 x 80 x 90)	4.71 x 2.74 x 3.26 (120 x 70 x 83)	4.41 (112)	2.44 (62)	3.63 (92)	1.66 (42)	N/A	N/A	CF
COPC1PB	1	4.34 x 3.16 x 2.79 (110 x 80 x 71)	3.92 x 2.74 x 2.51 (100 x 70 x 64)	3.62 (92)	2.44 (62)	2.85 (72)	1.66 (42)	N/A	1.20 (31)	CF
COPC2PB	2	5.12 x 3.16 x 3.54 (130 x 80 x 90)	4.71 x 2.74 x 3.26 (120 x 70 x 83)	4.41 (112)	2.44 (62)	3.63 (92)	1.66 (42)	1.97 (50)	1.20 (31)	CF
COPC1PB22	1	4.34 x 3.16 x 2.79 (110 x 80 x 71)	3.92 x 2.74 x 2.51 (100 x 70 x 64)	3.62 (92)	2.44 (62)	2.85 (72)	1.66 (42)	N/A	0.89 (23)	CF
COPC2PB22	2	5.12 x 3.16 x 3.54 (130 x 80 x 90)	4.71 x 2.74 x 3.26 (120 x 70 x 83)	4.41 (112)	2.44 (62)	3.63 (92)	1.66 (42)	1.97 (50)	0.89 (23)	CF

All measures are in inches, items in parentheses are in millimeters.
 Note: Shown C06PBW for Reference.
 * Panel ordered separately.